

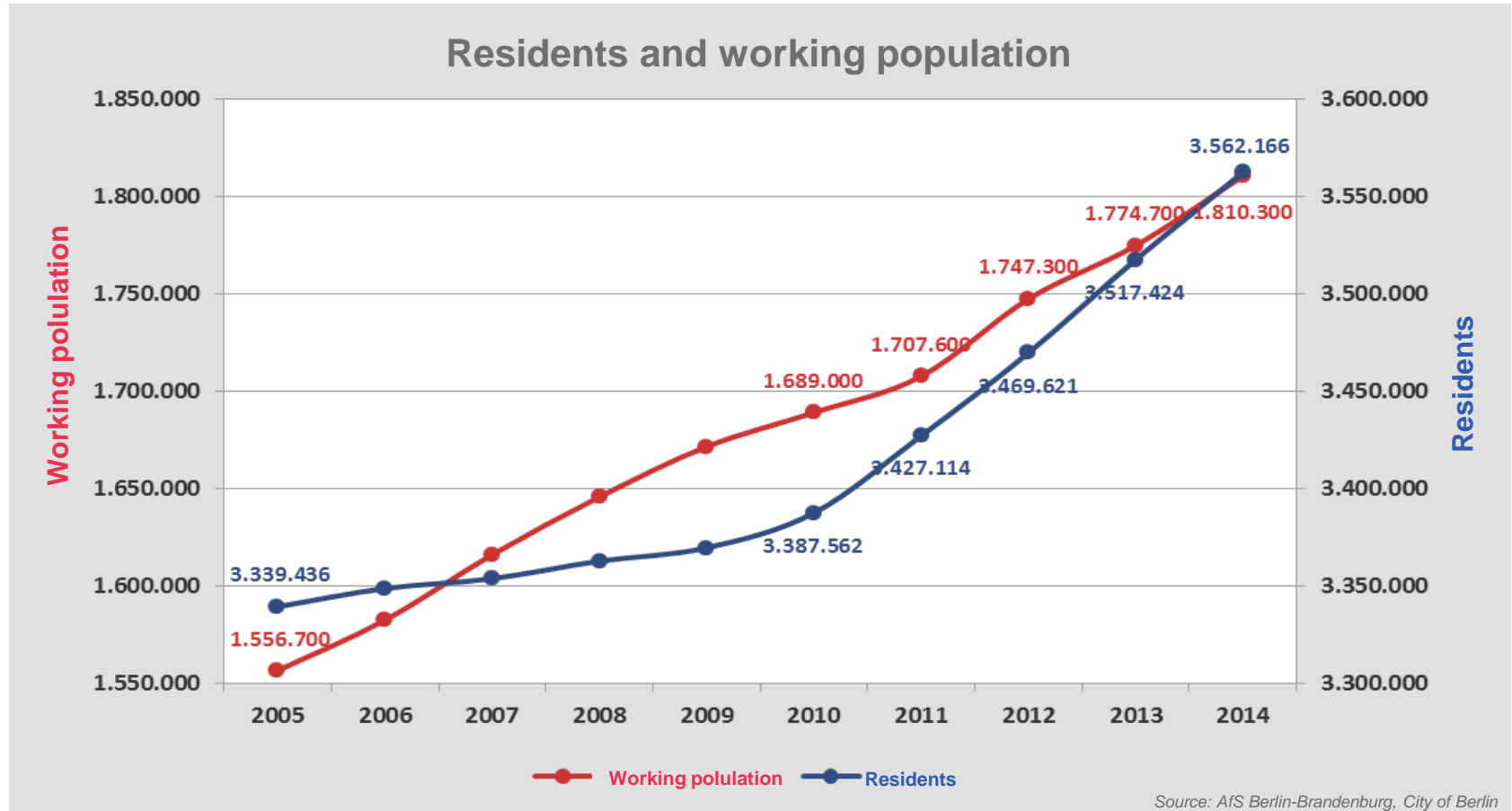
# **SmartCity.Berlin**

The future starts here

## **Network Smart City Berlin – Integrator of Urban Transformation Process**

**1 June 2017**

# Growth in Berlin



**Berlin is growing. By the year 2030, there will be 250,000 more people living in the city.**

# Transformation and innovation in Berlin

## Berlin – a success story of transformation



- ➔ Experienced in urban transformation
- ➔ Two major phases of urban transformation: after 1945 and after 1990
- ➔ After 1990
  - ➔ Reconnection of the divided parts of the city
  - ➔ Implementation of large-scale renewal and development
  - ➔ Modernization of urban infrastructure

€ INVESTMENTS in R&D  
annually

1.5 billion €

↑ TOP INSTITUTES  
in Berlin

100

↑ TECHNOLOGY CENTERS  
in Berlin

22

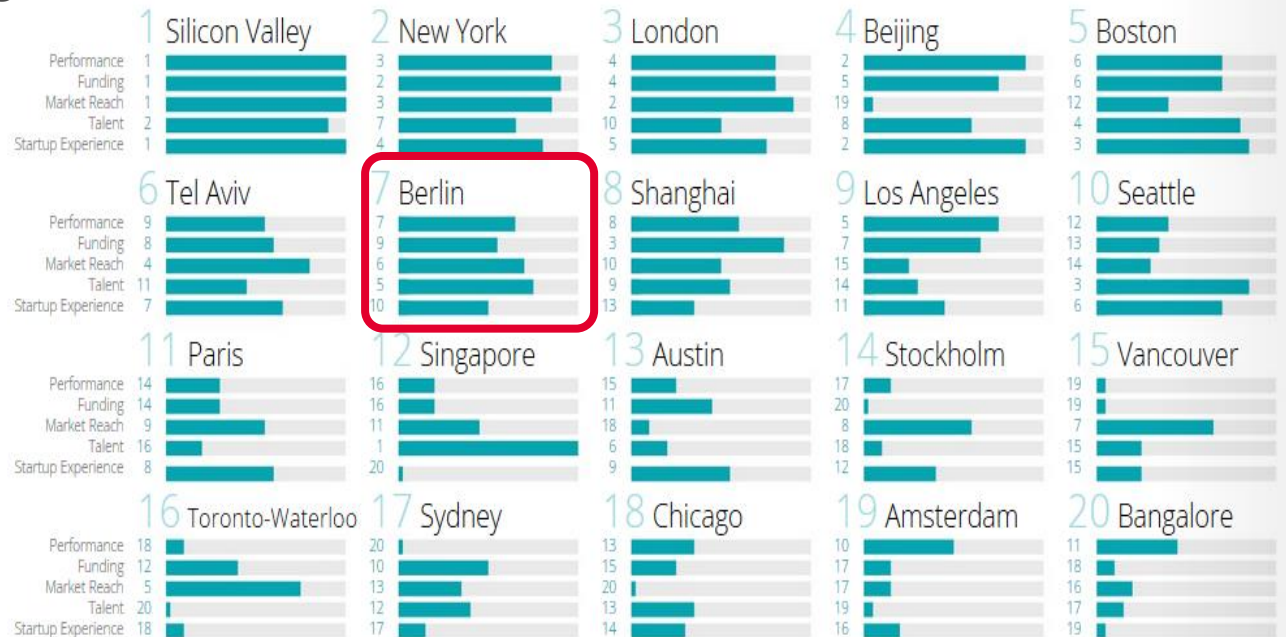
# Company foundations in Berlin

## 2017 Global Startup Ecosystem Ranking

➔ 2014:  
174.000 foundations

➔ ca. 500 ICT  
startups p.a.

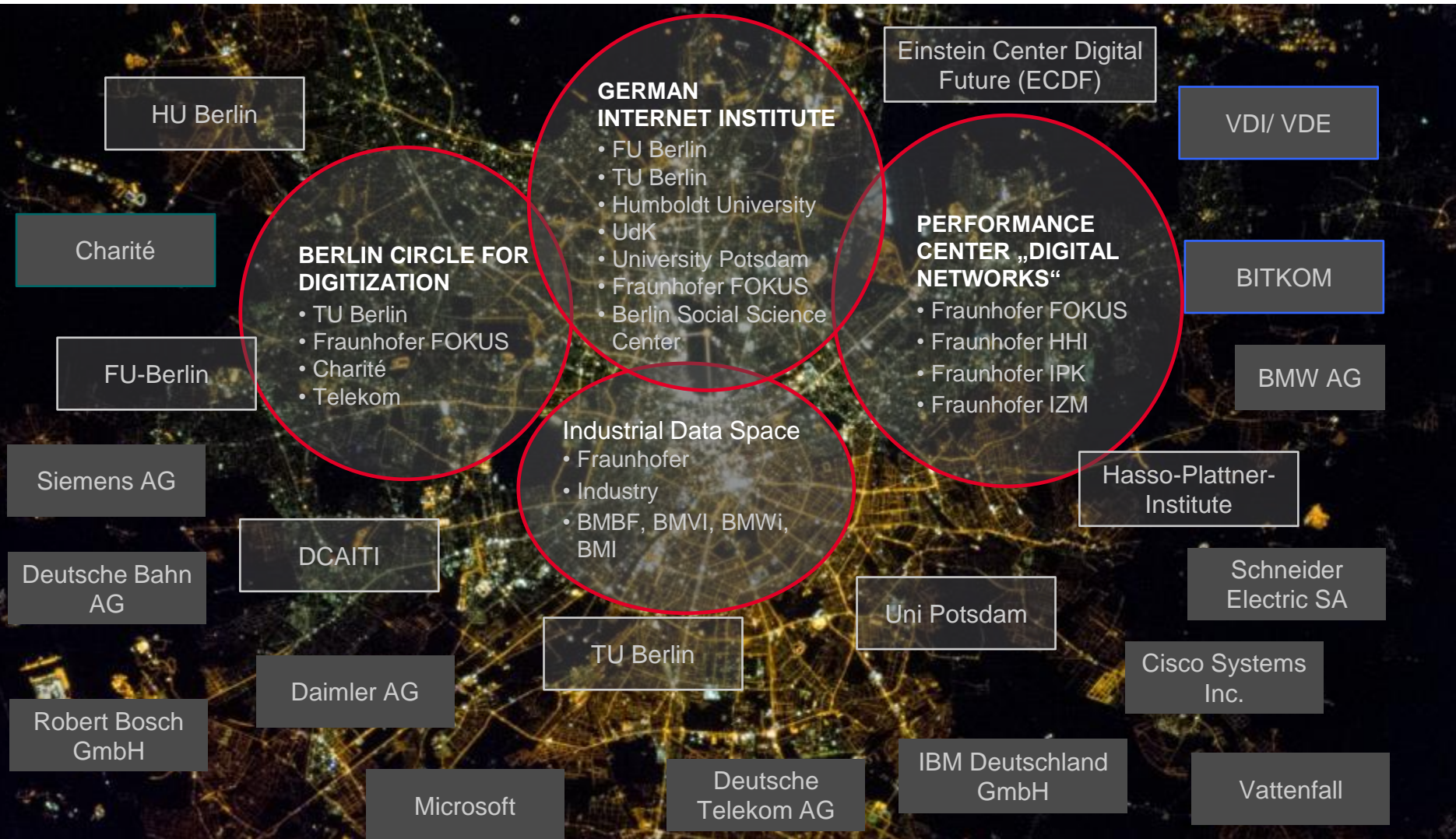
➔ 2014/2015:  
~ 9 bn€ turnover  
in ICT,  
58.000 employees

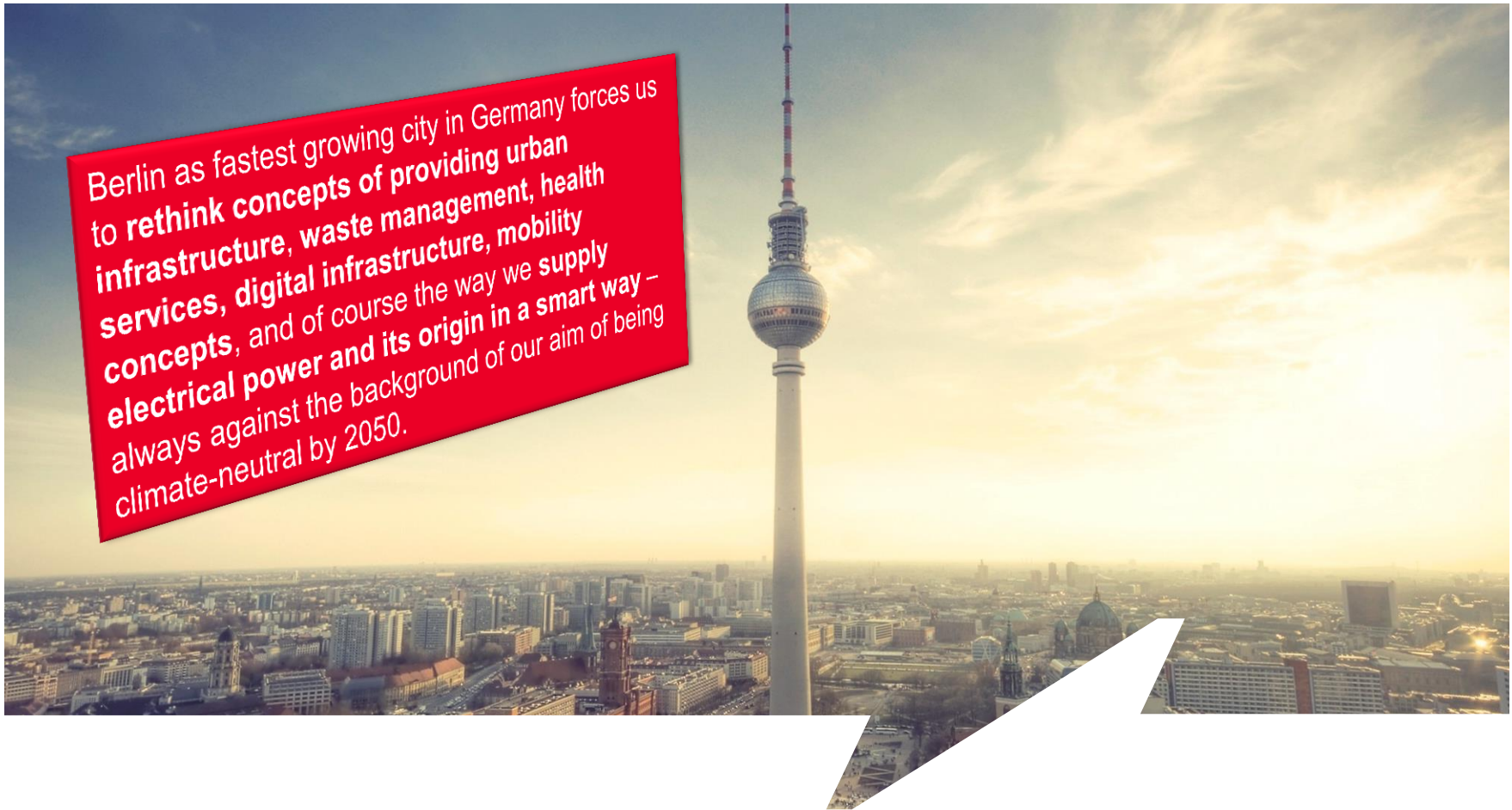


Copyright © 2017 Startup Genome LLC. All Rights Reserved.



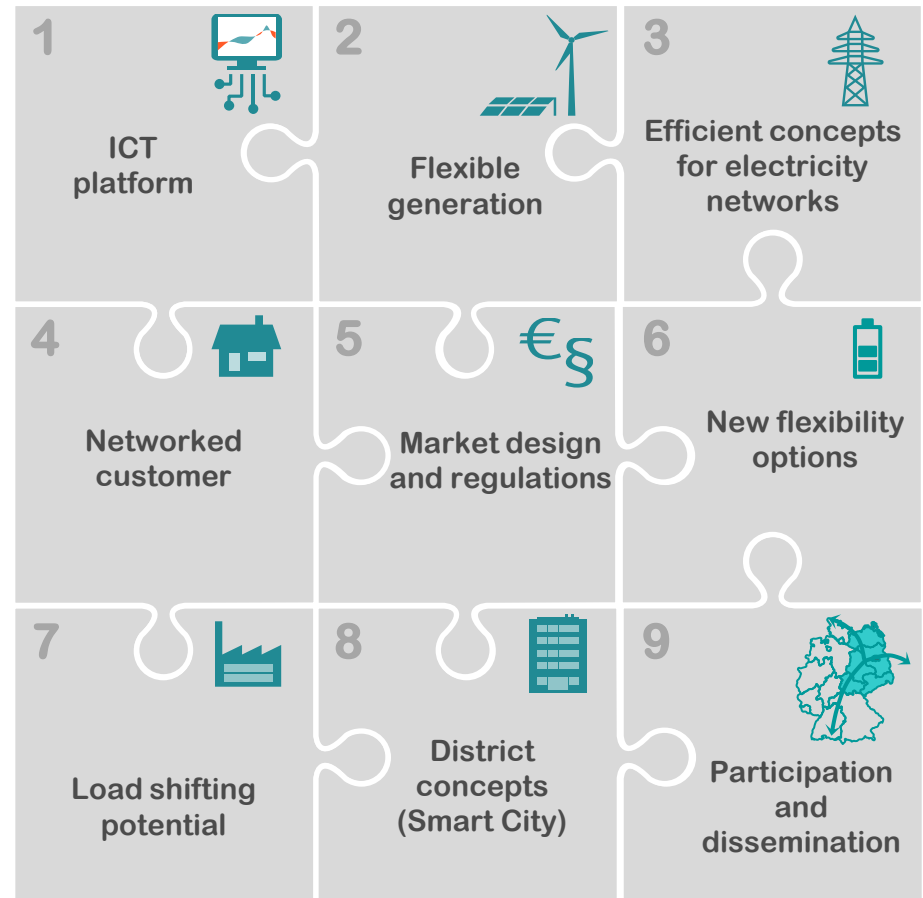
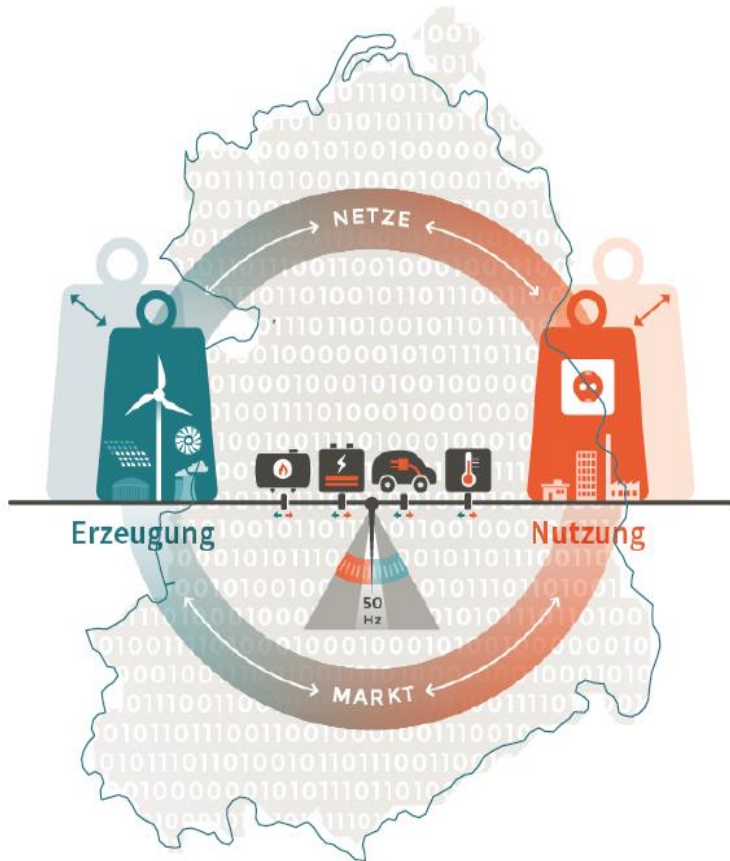
# Berlin - center for digital network





## From challenges to projects

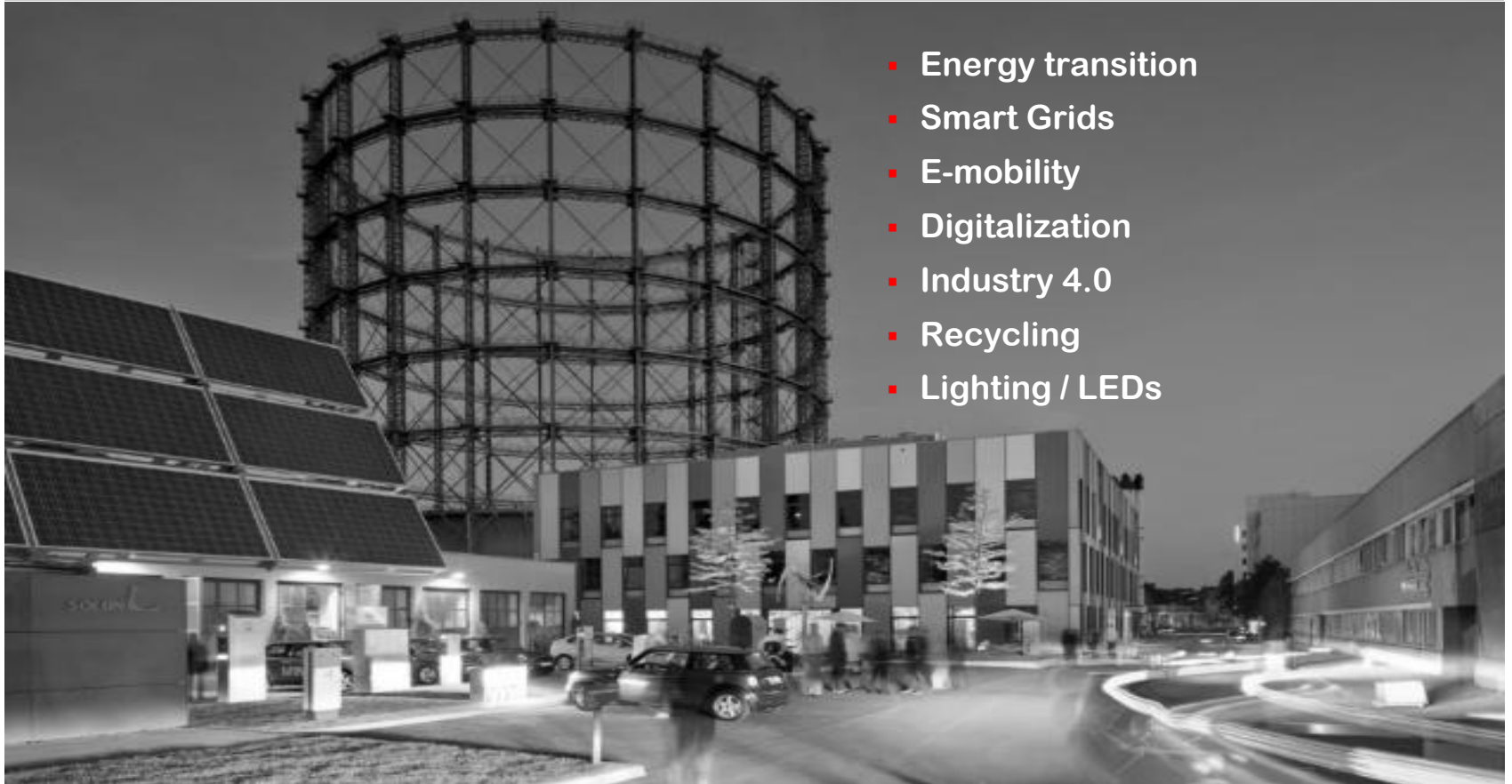
# WindNODE The showcase for the intelligent energy system in north-eastern Germany





# Smart and integrated infrastructure

## EUREF – Center of sustainable innovations





# Urban Platforms

# BERLIN OPEN DATA

Open Data Berlin sucht  
Verstärkung  
Studentischer Mitarbeiter (m/w) gesucht.  
► Weitere Informationen

Open Data Schulung Verstärkung gesucht JedeSchule.de  
Bildwechsel anhalten

Offene Daten lesbar für  
Mensch und Maschine.  
Das ist das Ziel.

Geben Sie ein Stichwort ein

Suchen

Glas recyceln in  
**348**  
Altglascontainern

Jeder Bezirk bearbeitet  
**ca. 210**  
Buchungen pro Tag

Schlendern Sie über  
**184**  
Wochen- und Trödelmärkte

Dieses Jahr gibt es  
**352**  
Straßen- und Volksfeste

Wir haben Platz für  
**11.577**  
Kinder in den Kitas

## Open data platform

## Construction site information platform



infreSt | Baustellenatlas Home » Baustellen und Events Frank Bebernick HIR

### #4487 110 kV Netzoptimierung Charl...

Ereignis Geometrien Zu koordinierende Überlappungen

Bezeichnung 110 kV Netzoptimierung Charlottenburg (F)

Adressbezeichnung Sommeringstraße, Spreebord, Arcostraße

Beginn 01.01.2017 Ende 30.07.2017

Themen

- ☒ Strom ☐ Gas
- ☐ Wasser/Abwasser ☐ Fernwärme
- ☐ Telekommunikation ☐ Beleuchtung
- ☐ Lichtsignalanlagen ☐ ÖPNV
- ☐ Bergbau ☐ Straßenbau
- ☐ Hochbau ☐ Events

Auftraggeber

Ansprechpartner Miercke, Martina (Vattenfall Europe Netzservice)

Vertreter

☐ Vertreter ebenfalls benachrichtigen

Kurzbeschreibung Ansprechpartner Herr Beyer 49202-5613

Lage ☒ Fahrbahn ☒ Rad und Fußweg

☒ Straße mit Begleitgrün

Int. Projektbez.

Status GEPLANT

Erstellt von mikilan am 16.09.2015 um 09:54:39  
Bearbeitet von mikilan am 16.09.2015 um 09:54:39

Bearbeiten Speichern Löschen Schliessen

Bezeichnung	Beginn	Ende	Ersteller Organisation	Auftrag
Kundenversorgung	2015-10-04	2015-12-31	Vattenfall Europe Netze	
Teilverkabelung 765/767	2015-09-16	2016-06-30	Vattenfall Europe Netze...	

# InfraLab Berlin



- E-mobility: fleet sharing, charging infrastructure
- Digitalization: shared data, sensoric
- Circular economy: bio-diversity, reverse logistic
- Climate protection: solarcity concept, climate education
- ...

# Berlin Agency of Electromobility



## Vehicles

Development and Integration of smart vehicles into the traffic system

## Urban traffic

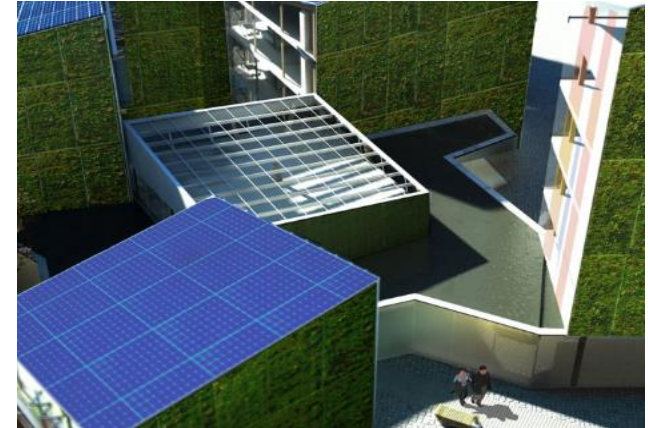
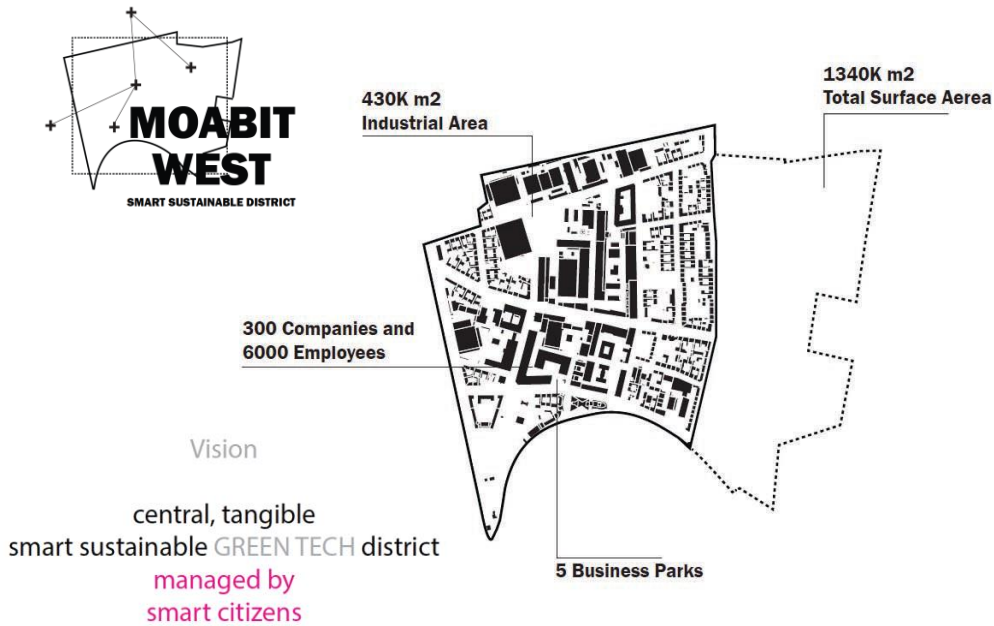
Combination of electric traffic offers

## Mobility and energy

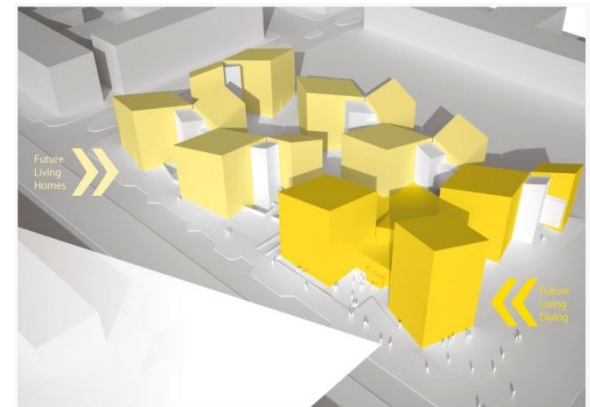
Integration of electric mobiles as smart storage units



# Smart Districts and Future Living



## FUTURE LIVING® BERLIN



**CHORA**  
city & energy



**beim** Berlin  
Senatsverwaltung  
für Stadtentwicklung  
und Umwelt

**moabit**  
unternehmensnetzwerk

Source: <http://ssd-moabit.org/>

Source: <http://future-living-berlin.com/>








# The Network Smart City Berlin

# Smart City Strategy Berlin

The Smart City approach aims to find solutions to the ecological, social, economic and cultural challenges faced by Berlin through the use of intelligent technology. Berlin wishes to preserve – and as far as possible enhance – its appeal and its quality of life.

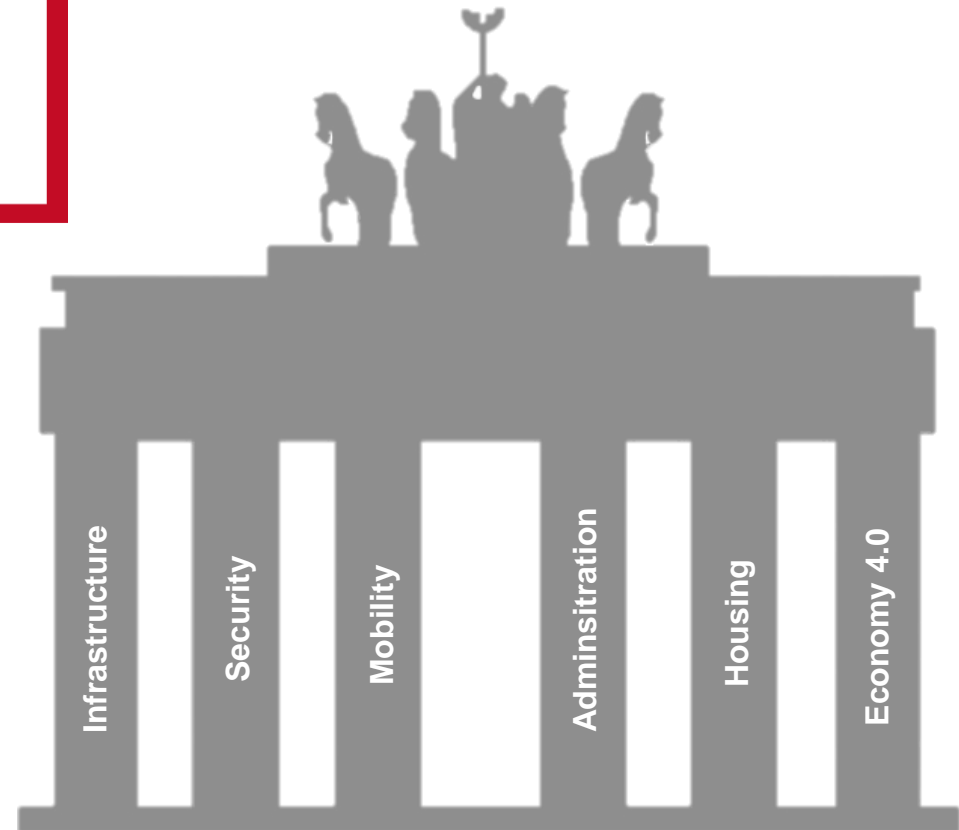
Table of contents	
I.	Strategic Framework for Smart City Berlin
I.1	Berlin's Unders
I.2	The Role of Te
I.3	Areas of Action
I.3.1	Smart administr
I.3.2	Smart housing
I.3.3	Smart economy
I.3.4	Smart mobility
I.3.5	Smart infrastru
I.3.6	Public safety
II.	Ways of Impleme
II.1	The Next Steps
II.2	Public Relations
II.3	Smart City Partne
Appendix	
Strategy Development M	
A.	Smart City inter
B.	Workshops, Ex
C.	Experts

Senate Department for  
Urban Development and the Environment

 **Berlin**

**Smart City Strategy Berlin**

Status: 21 April 2015



# Network Smart City Berlin - organisation

## Fields of Action



Infrastructure

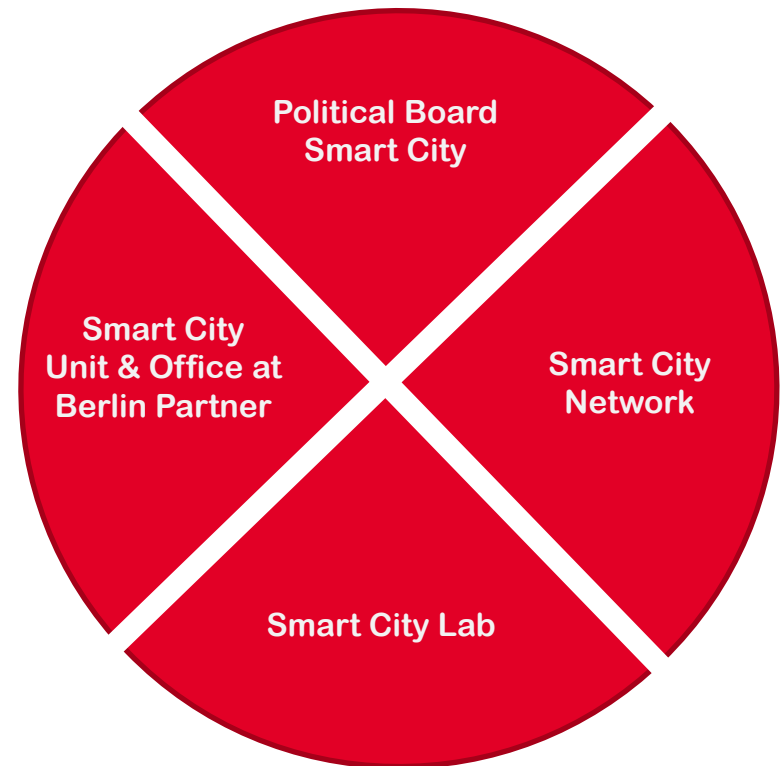
Economy

Government

Security

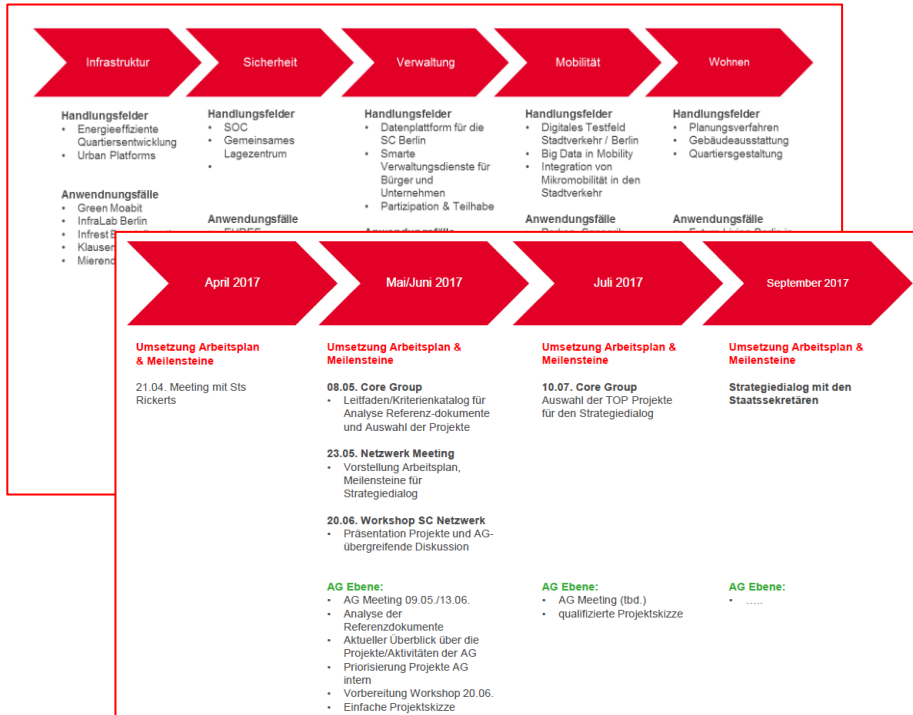
Housing

Mobility



Source: Smart City Strategy Berlin 2015

# Network Smart City Berlin - status quo



- Set-up of 5 working groups, core group and announcement of speakers
- Administration of the Unit Smart Cities @ Berlin Partner for Business and Technology
- bi-weekly meeting with representatives of the Senate Berlin
- 5 network meetings
- ca. 20 workshops
- 1 position paper
- Participation in national and international conferences and events
- Preparation of a strategic dialogue with the Senate to develop a roadmap für 2018 ff. (planned in autumn 2017)

Besuchstour neuer Senat Berlin –Q1 ongoing 2017

Strategiedialog Netzwerk & Senat – Ende Q2/Anfang Q3 2017

Netzwerkmeeting – Q3

InterGeo & SC Expo Barcelona – Q4

Review AGs – Q4



# Thank you!

---



## **Claudia Rathfux**

Spokeswoman of the Network Smart City  
Berlin, Stromnetz Berlin

[claudia.rathfux@stromnetz-berlin.de](mailto:claudia.rathfux@stromnetz-berlin.de)

## **Prof. Ina Schieferdecker**

Spokeswoman of the Network Smart City  
Berlin, Fraunhofer FOKUS

[ina.schieferdecker@fokus.fraunhofer.de](mailto:ina.schieferdecker@fokus.fraunhofer.de)



## **Alexander Möller**

Head of Unit Smart Cities,  
Berlin Partner for Business and Technology

[Alexander.Moeller@berlin-partner.de](mailto:Alexander.Moeller@berlin-partner.de)